

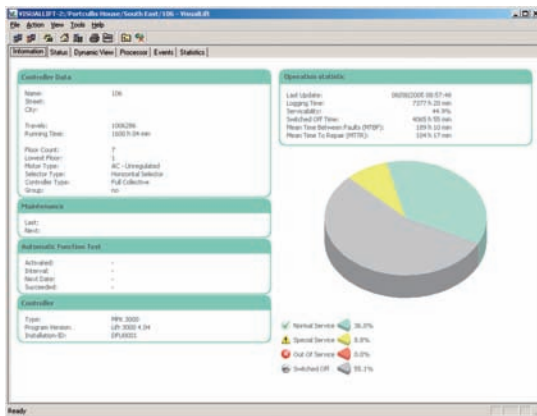
VisualLift

The New Remote Monitoring Generation

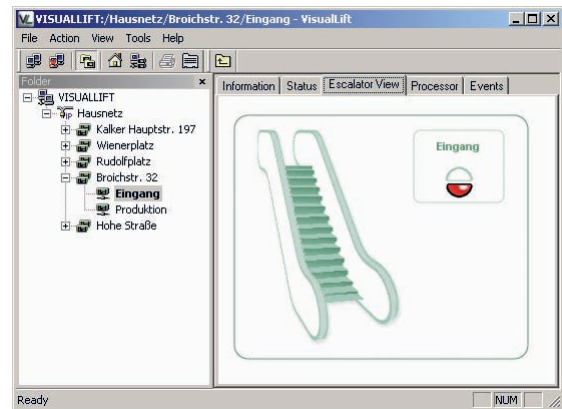
VisualLift is the new generation of our remote monitoring software. This high-performance remote monitoring software puts you in the position to visualise all performance characteristics of your lift installations from any location. This intuitively-structured PC software allows targeted access to dynamic and sta-

tic operating information, event messages and parameter settings as well as immediate access to the control systems display. We offer various networking options for monitoring all the elevators in a complex of buildings, even the use of existing intranet structures. It is possible that in one network any number of users can access

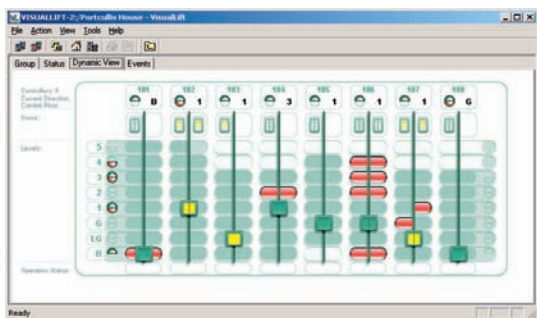
the lift data simultaneously. Every access is recorded by the secure login procedure. Elevator Controls from different manufacturers as well as elderly ones and escalators can be connected with the use of our DLON I/O Interface via LON Network, RS 232 or modem.



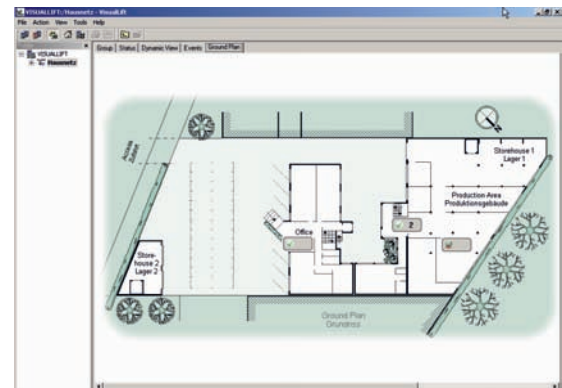
Control Information



Escalator View



Dynamic Travel View



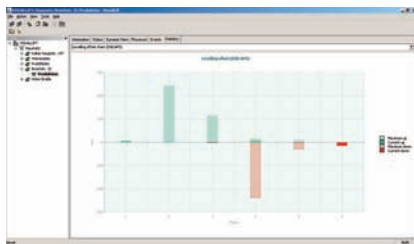
Campus View

Setup

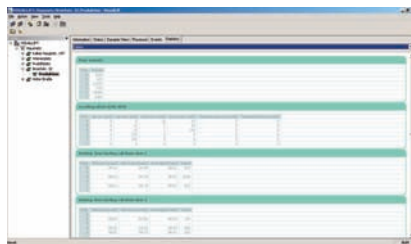
- Automatic Setup with language select (German or English)
- Minimum operating system required: Windows 2000 / 2003 / XP for Server and Clients

Various Connection Options for Lift Controls

- Single control with RS232
- Single control and groups with modem
- Single control and Ethernet gateway Intranet (Ethernet: 10/100 TBase)
- DLON-Net via RS232
- DLON-Net via Modem
- DLON-Net via Ethernet gateway via Intranet (Ethernet: 10/100 TBase)



Statistics



Chart



Processor View

Features

- | | |
|---|---|
| • User-password administration for server access and connected installations | • Automatic identification and configuration of new connected lifts |
| • Configuration mode for setup of new, and modification of existing installations | • Support of Kollmorgen control types MPK 400 and MPK3000 (MPK40, MPK4000 and MPK600 following) |
| • User-mode with graduated rights for total control of visualisation and parameterisation | • Connection with several installations at one time |
| • Language support for the connected client (German or English) | • Storage of all installation configurations |
| • Configuration of data ports for connection of new installations | • Storage of all control configurations, events |
| | • Various views for all control statistical data |

Control Data Performance

- | | |
|--|--|
| • Control type | • State of elevator doors |
| • Program version | • State of calls |
| • Installation ID | • Setting calls in dynamic drive view |
| • Basic settings of the lift (number of floors, ground floor, type of drive, type of shaft encoding, control type) | • State / result of automatic performance check |
| • Group of controls | • Operating hours |
| • Query / visualisation of all current event data stored on the server | • Drive counter |
| • Operating states | • Operating statistics |
| • Floor state | • Floor statistics (counter) |
| • Direction indicator | • Current and static positioning for APS und DSK |